



FOR LEASE

OFFICE SUITE FOR LEASE

PROPERTY HIGHLIGHTS

- Two private offices and open area
- Off-street parking
- HVAC and ceiling fan
- Spot for kitchenette
- Windows (operable) for natural light
- Common area restrooms
- Car charging stations
- Free Emery-Go-Round shuttle to BART
- Near Doyle Street Cafe/Arizmendi Bakery/ Can't Fail Cafe
- Available immediately

LOCATION

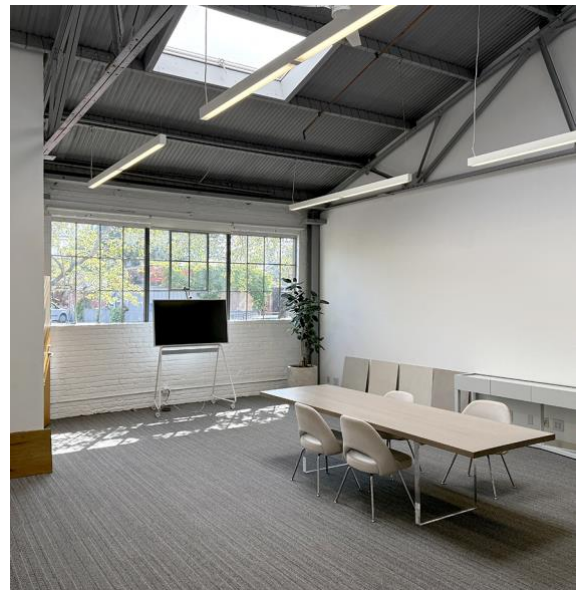
5835 Doyle St. Suite 108,
Emeryville

OFFERED AT

\$2.75 NNN
.65 estimate

SIZE

± 1,200 sq. ft.



**NORHEIM
& YOST**

732 Addison Street
Suite "C"
Berkeley, CA 94710

Jeff Lahr

BRE # 01296493

jl@noryost.com

510-527-3400 x15