

1331 Seventh St. Suite E

FOR LEASE

HIGH-END OFFICE CONDO/ LIGHT INDUSTRIAL/ R&D
CENTRO 1331

SIZE
1,320 sq. ft.

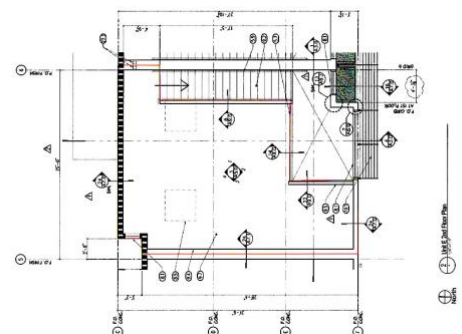
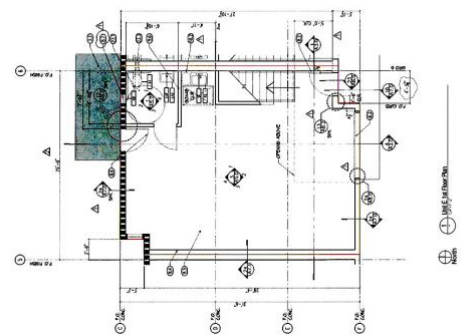
LEASE RATE
\$3.25

PROPERTY HIGHLIGHTS

- Contemporary Design – Gold LEED Certified
- Open-plan first floor and mezzanine
- Glass roll-up door
- Polished concrete floor
- Private restroom and kitchenette
- Efficient radiant heating
- 2kw solar array
- High-speed broadband available
- Two private parking spaces
- Close to Whole Foods, Picante Mexican Restaurant, Fieldwork & Gilman Breweries, REI, North Face Outlet, & more
- Available 2/1/26

LOCATION

1331 Seventh Street
Between Gilman and Camelia



**NORHEIM
& YOST**

732 Addison Street
Suite "C"
Berkeley, CA 94710

John Norheim
BRE # 00770171
jn@noryost.com
510-527-3400 x10

Steve Smith
BRE# 01330154
ss@noryost.com
510-527-3400 x12