

4226 Park Blvd.



FOR LEASE

OFFICE SPACE IN PRIME GLENVIEW LOCATION

LOCATION

4226 Park Blvd.
In Glenview

OFFERED AT

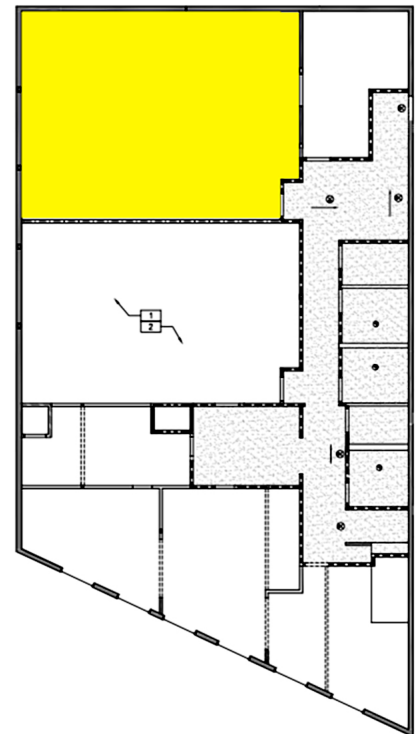
\$2,500/month I.G

PROPERTY HIGHLIGHTS

- Open-plan office, versatile floorplan
- Tall ceilings with 23' clear height with beautiful, exposed wood beams, new skylight
- Second floor, walk up only
- High visibility building in bustling retail district
- Classic building with period details and curb appeal
- Entire building undergoing complete remodel
- December delivery
- Shared remodeled restrooms
- Independent, merchants and renown eateries nearby
- Near Paulista, Marzano, East Bay Dance Center and more
- High foot and car traffic

SIZE

±1250 sq. ft.



**NORHEIM
& YOST**

732 Addison Street
Suite "C"
Berkeley, CA 94710

Catherine Macken

BRE# 02136323

cm@noryost.com

510-527-3400 x15

Steve Smith

BRE# 01330154

ss@noryost.com

510-527-3400 x12

All information furnished herein was provided by sources deemed reliable, but no representation is made or implied as to the accuracy thereof.