

2550-2560 Ninth St.

FOR LEASE

BRIGHT CREATIVE OFFICE SPACE PARKER PLAZA ATRIUM OFFICE CENTER

**BONUS FEE FOR ANY NEW THREE-YEAR DEAL
SIGNED BEFORE JULY 1ST! \$3 PSF Per Year**

LOCATION

2550-2560 Ninth St.
Berkeley

OFFERED AT

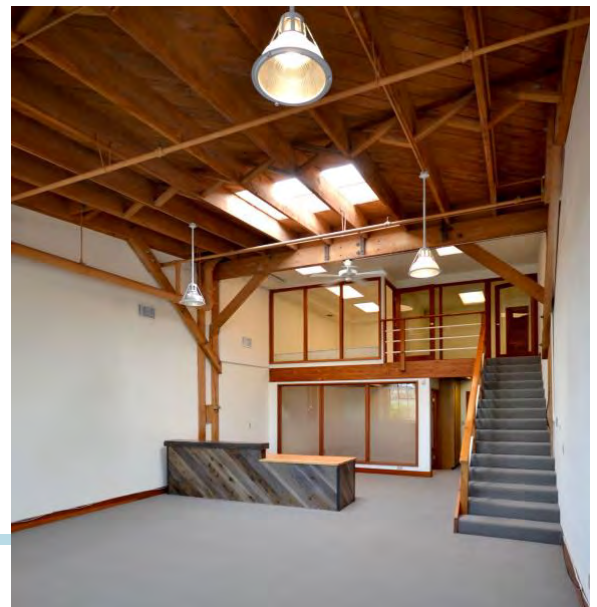
As low as
\$2.50 sq. ft.

SIZE

Availability range: 750 - 3,600 sq.ft.

PROPERTY HIGHLIGHTS:

- High-ceilinged space with great natural light
- Operable windows and skylights
- Walk to restaurants and Berkeley Bowl West
- Free shuttle to Ashby and McArthur Bart, Dwight Way bus to downtown Berkeley
- Fitness and dance studio with a range of classes
- Enclosed parking in garage and two lots



**NORHEIM
& YOST**

732 Addison Street
Suite "C"
Berkeley, CA 94710

Elena Holsman
BRE# 01731812
eh@noryost.com
510-527-3400 x11



2560 Ninth St. Suite 117
Berkeley, CA 94710

All information furnished herein was provided by sources deemed reliable, but no representation is made or implied as to the accuracy thereof.

