



FOR LEASE

**GROUND-FLOOR OFFICE OR MEDICAL SPACE
NEAR DOWNTOWN/CAMPUS**

SIZE

±2,400 sq.ft.

OFFERED AT

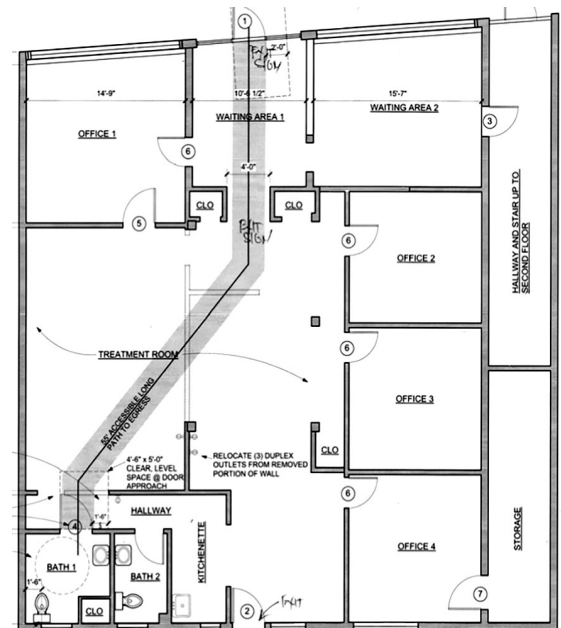
\$2.65/sq.ft. IG

LOCATION

1834 University Ave., Berkeley

PROPERTY HIGHLIGHTS

- Large open floor plan
- Four private offices
- Roomy waiting area
- Two private restrooms
- Kitchenette
- High ceilings
- New paint/carpet
- HVAC
- Private off-street parking



**NORHEIM
& YOST**

732 Addison Street
Suite "C"
Berkeley, CA 94710

Steve Smith

BRE# 01330154

ss@noryost.com

510-527-3400 x12

John Norheim

BRE # 00770171

jn@noryost.com

510-527-3400 x10

All information furnished herein was provided by sources deemed reliable, but no representation is made or implied as to the accuracy thereof.