

1331 Seventh St. Suite D

FOR LEASE

WEST BERKELEY CREATIVE OFFICE CONDO

PROPERTY HIGHLIGHTS

- Centro 1331 Office Condo
- Open plan first floor and mezzanine
- Contemporary Design - LEED Certified
- Efficient Radiant heating
- Glass Roll-up door
- Polished concrete floor
- Private Restroom
- Solar (2KW array)
- Kitchenette
- High Speed Broadband available
- 2 parking spaces
- Close to Whole Foods, Picante Mexican Restaurant, Farm Burger, Fieldwork & Gilman Breweries, Philz Coffee, REI, North Face Outlet, & more
- Available immediately

SIZE

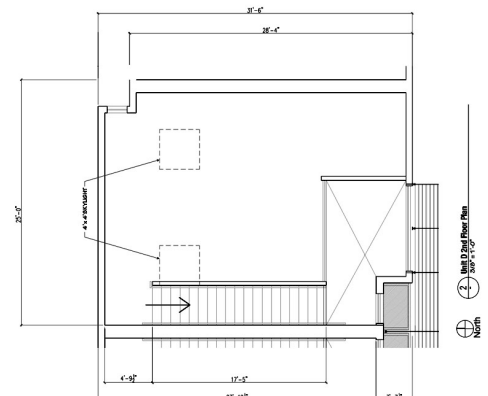
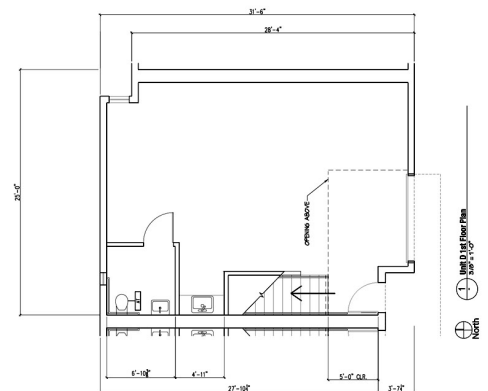
1,317 sq.ft.

OFFERED AT

\$3.75 F.S.
(excluding interior
janitorial)

LOCATION

1331 Seventh St. Suite D
First floor and mezzanine



**NORHEIM
& YOST**

732 Addison Street
Suite "C"
Berkeley, CA 94710

John Norheim

BRE # 00770171

jn@noryost.com

510-527-3400 x10

Steve Smith

BRE# 01330154

ss@noryost.com

510-527-3400 x12

All information furnished herein was provided by sources deemed reliable, but no representation is made or implied as to the accuracy thereof.