



FOR LEASE

BRAND NEW OFFICE BUILDING FOR LEASE

SIZE

±1,080 – 2,160
sq. ft.

OFFERED AT

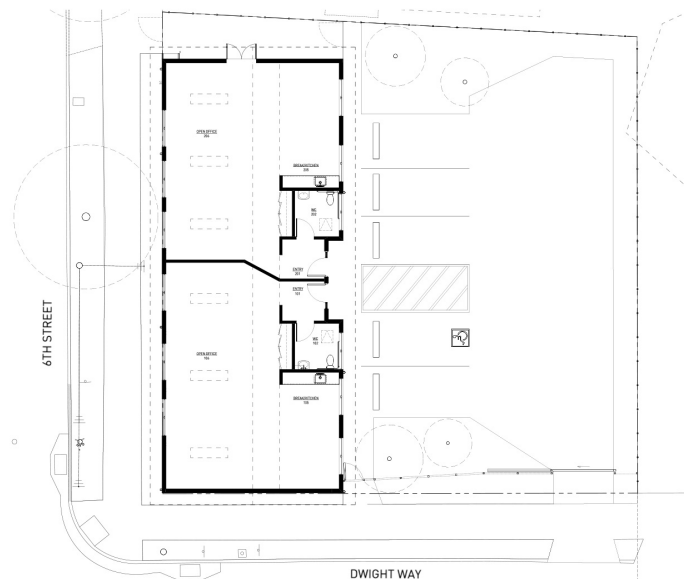
\$3.50 /sq.ft./mo. IG

PROPERTY HIGHLIGHTS

- Brand new construction available July 2019
- Beautiful natural light
- Open floor plan with kitchenette and private restroom
- Polished concrete floors
- HVAC
- Distributed cable throughout
- Outdoor eating area
- Secured parking
- Can be delivered as a single tenant space or divided for two 1,080 units

LOCATION

2445 Sixth Street



**NORHEIM
& YOST**

732 Addison Street
Suite "C"
Berkeley, CA 94710

John Norheim

BRE # 00770171

jn@noryost.com

510-527-3400 x10

Elena Holsman

BRE# 01731812

eh@noryost.com

510-527-3400 x11

All information furnished herein was provided by sources deemed reliable, but no representation is made or implied as to the accuracy thereof.