



# 1385 Shattuck Ave. Suite B

## FOR LEASE

**NORTH BERKELEY OFFICE, SERVICE,  
OR RETAIL SPACE**

### PROPERTY HIGHLIGHTS

- Fully built out office
- Small conf./office
- Private bathroom
- Off-street parking
- Just North of CVS pharmacy
- Available August 1<sup>st</sup> 2024

### SIZE

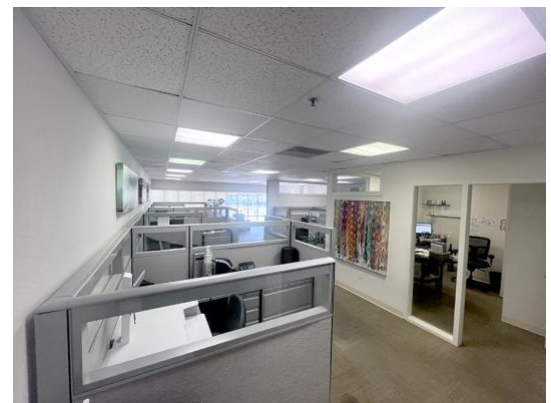
± 1,325sq. ft.

### OFFERED AT

\$3.25 /sq. ft.  
plus CAM

### LOCATION

1385 Shattuck Avenue Suite "B"  
At Rose St.



**NORHEIM  
& YOST**

732 Addison Street  
Suite "C"  
Berkeley, CA 94710

**John Norheim**  
BRE # 00770171  
jn@noryost.com  
510-527-3400 x10

All information furnished herein was provided by sources deemed reliable, but no representation is made or implied as to the accuracy thereof.