



# FOR LEASE

## MODERN OFFICE SUITE OAKLAND/EMERYVILLE BORDER

### SIZE

± 2,800sq.ft.  
office suite

### LEASE RATE

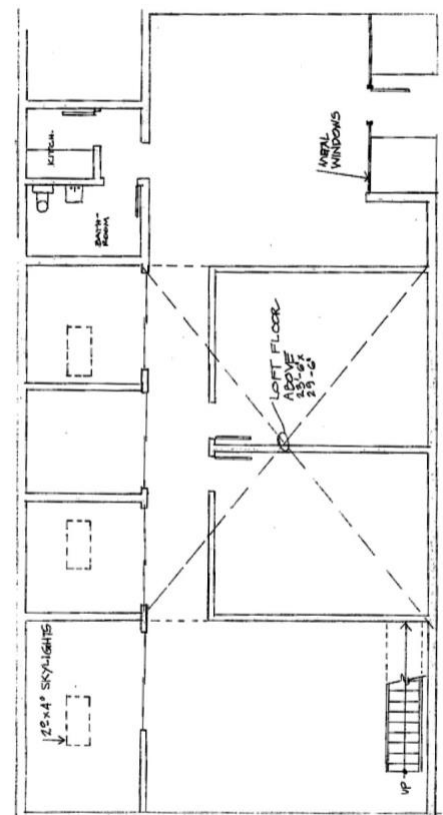
\$3.25/sq. ft. I.G.  
Plus CAM

### LOCATION

1144-65<sup>th</sup> Street Suite "F"

### PROPERTY HIGHLIGHTS

- Oakland/Emeryville border. Between Hollis St. and San Pablo Ave.
- 2,800± sq. ft. office suite.
- High ceilings in a modern project
- Ground floor and open mezzanine space
- 4 private offices
- 2 large conference rooms/ privates
- Small kitchenette
- HV/AC
- Private bathroom
- 2 parking spaces
- Great natural light



732 Addison Street  
Suite "C"  
Berkeley, CA 94710

**John Norheim**  
BRE # 00770171  
jn@noryost.com  
510-527-3400 x10

**Steve Smith**  
BRE# 01330154  
ss@noryost.com  
510-527-3400 x12

All information furnished herein was provided by sources deemed reliable, but no representation is made or implied as to the accuracy thereof.