



FOR LEASE

MODERN OFFICE SUITE OAKLAND/EMERYVILLE BORDER

SIZE

2,800± sq.ft.
office suite

LEASE RATE

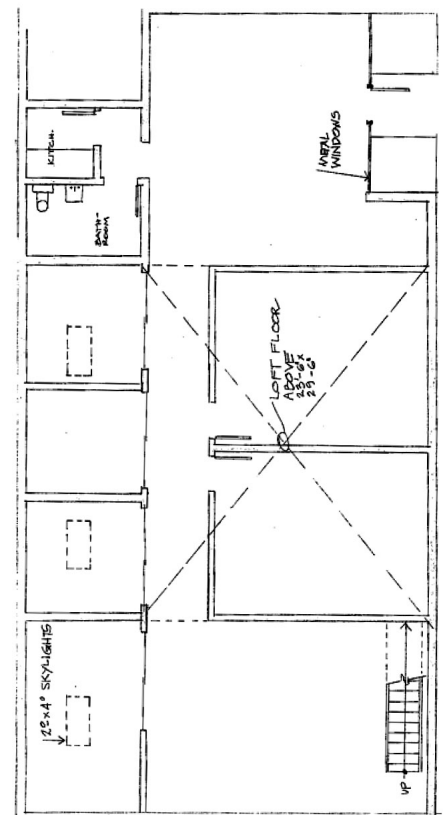
\$3.25/sq. ft. I.G.

LOCATION

1144-65th Street Suite "F"

PROPERTY HIGHLIGHTS

- Oakland/Emeryville border. Between Hollis St. and San Pablo Ave.
- 2,800± sq. ft. office suite.
- High ceilings in a modern project
- Ground floor and open mezzanine space
- 4 private offices
- 2 large conference rooms/ privates
- Small kitchenette
- HV/AC
- Private bathroom
- 2 parking spaces
- Great natural light



732 Addison Street
Suite "C"
Berkeley, CA 94710

John Norheim
BRE # 00770171
jn@noryost.com
510-527-3400 x10

Steve Smith
BRE# 01330154
ss@noryost.com
510-527-3400 x12

All information furnished herein was provided by sources deemed reliable, but no representation is made or implied as to the accuracy thereof.