



FOR LEASE

WEST BERKELEY OFFICE SUBLEASE

PROPERTY HIGHLIGHTS:

- ±3,160 square feet of creative office space
- Four private offices
- Three semi-private offices
- Large conference room
- Large kitchen
- Server room
- High ceilings
- Open space
- Exposed trusses
- Four parking spaces
- Lease expires 08/31/2021

LOCATION

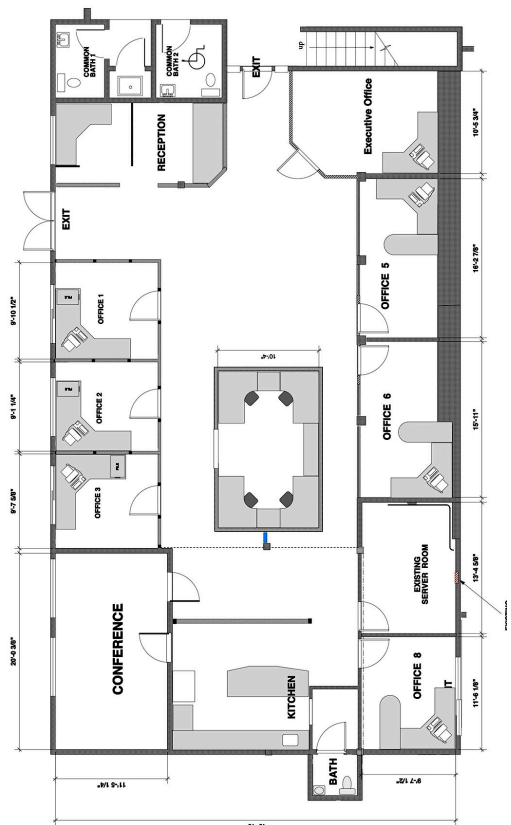
2240 Sixth St.
Berkeley, CA

OFFERED AT

\$2.35/sq.ft./mo.
Plus CAM

SIZE

3,160 sq.ft.



**NORHEIM
& YOST**

732 Addison Street
Suite "C"
Berkeley, CA 94710

Steve Smith
BRE# 01330154
ss@noryost.com
510-527-3400 x12

All information furnished herein was provided by sources deemed reliable, but no representation is made or implied as to the accuracy thereof.