

1043 Pardee St.



FOR LEASE

WEST BERKELEY – NEW OFFICE SUITE

PROPERTY HIGHLIGHTS

- New Building, great space never occupied before.
- Architecturally very interesting
- Ground floor plus mezzanine space
- 3 private offices
- 1 large conference room
- Hardwood floors
- Hydronic heating
- Secure off street parking spaces
- Open work areas
- Small kitchenette
- 2 restrooms
- Outside deck
- Skylights, and operable windows

LOCATION

1043 Pardee Street
Between 10th St. and
San Pablo Ave.

OFFERED AT

\$3.10/sq. ft. I.G.

SIZE

1,632 +/- sq. ft.

**NORHEIM
& YOST**

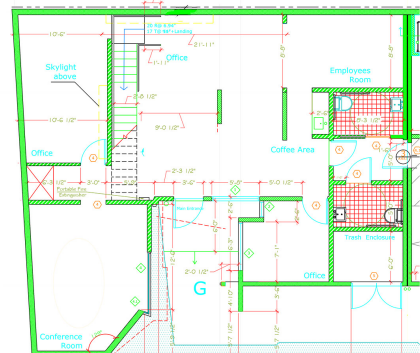
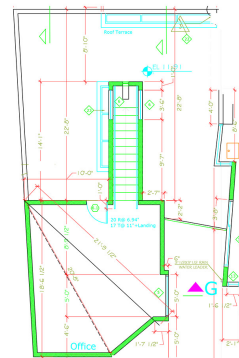
732 Addison Street
Suite "C"
Berkeley, CA 94710

John Norheim

BRE # 00770171

jn@noryost.com

510-527-3400 x10



All information furnished herein was provided by sources deemed reliable, but no representation is made or implied as to the accuracy thereof.