



2140 Shattuck Ave.

FOR LEASE

**CREATIVE OFFICE SPACE
IN THE HEART OF DOWNTOWN BERKELEY
WITH FULL FLOOR IDENTITY!**

PROPERTY HIGHLIGHTS

- Exquisite unobstructed views
- Beautiful conference room
- Two private breakout rooms
- Kitchenette
- Private restrooms
- Large open workspaces
- Concrete floors
- Exposed brick
- Brand new build-out
- Directly next to BART station
- 1 Gbps download and 1 Gbps upload fiber available for the suite

SIZE

± 3,860 sq. ft.

OFFERED AT

\$4.75 FS

LOCATION

2140 Shattuck Ave.
Eleventh floor suite



**NORHEIM
& YOST**

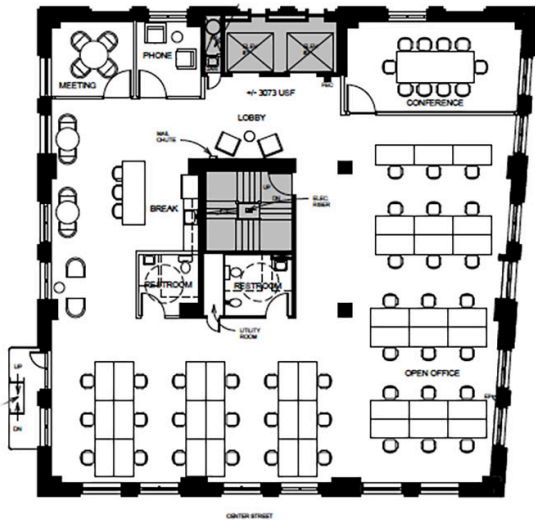
732 Addison Street
Suite "C"
Berkeley, CA 94710

Elena Holsman
BRE# 01731812
eh@noryost.com
510-527-3400 x11

Steve Smith
BRE# 01330154
ss@noryost.com
510-527-3400 x12

All information furnished herein was provided by sources deemed reliable, but no representation is made or implied as to the accuracy thereof.

2140 Shattuck Ave.



2140 Shattuck Ave. Suite 1000

