



FOR LEASE

DOWNTOWN OFFICE WITH RETAIL

LOCATION

2210 Harold Way,
Berkeley

OFFERED AT

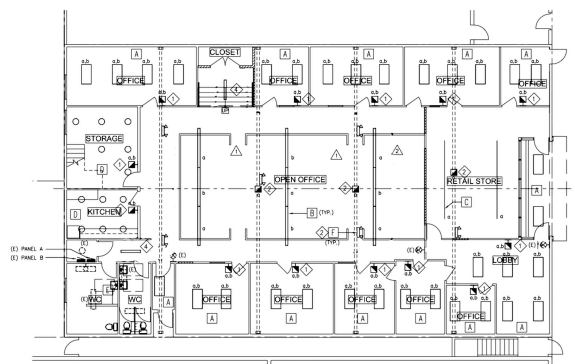
\$3.00/sq.ft.
\$2.50/sq.ft.
Reduced!

PROPERTY HIGHLIGHTS:

- High Ceilings, Exposed Barrel-Truss
- Nine perimeter Private offices
- Large open-plan middle space
- Private Restrooms
- Retail frontage
- Huge skylights
- Storage
- Centrally located in Downtown Berkeley. Two blocks from BART, UC Berkeley, and Berkeley City College. Just off Shattuck between the YMCA, Berkeley Public Library, and Hotel Shattuck. Surrounded by restaurants, shopping and public parking.

SIZE

±6,000 sq.ft.



**NORHEIM
& YOST**

732 Addison Street
Suite "C"
Berkeley, CA 94710

Steve Smith
BRE# 01330154
ss@noryost.com
510-527-3400 x12

John Norheim
BRE # 00770171
jn@noryost.com
510-527-3400 x10

All information furnished herein was provided by sources deemed reliable, but no representation is made or implied as to the accuracy thereof.